



MEETINGS & EVENTS



MILLENNIUM GLOUCESTER HOTEL LONDON KENSINGTON

MEETINGS AND EVENTS

All-purpose event spaces, flexible meeting and conference rooms, excellent location and exquisite delegate menus meant to *'Wake the Mind, Fuel the Body and Treat the Soul'*.

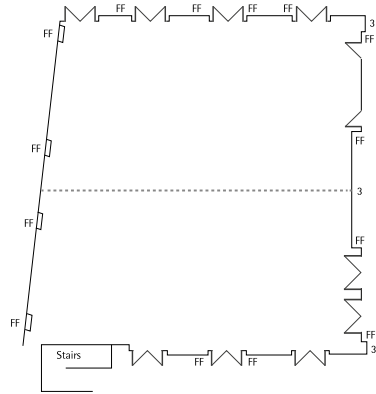
- 1,600m2 of meeting spaces
- 26 versatile meeting and function rooms with a total of 1,600 m2 of space
- Dedicated meetings and events team
- Advanced lighting, audio-visual and presentation technology equipment with HD video conferencing facility available
- Free Wi-Fi
- 24-hour Business Centre
- Extensive onsite parking outside the London congestion charge zone (charges apply)
- Dedicated reception, foyer and cloakroom available for larger function rooms
- Licensed for wedding ceremonies
- Syndicate and breakout rooms available





CAPACITIES

	Theatre	Classroom	Boardroom	Reception	Banquet	Cabaret	Dinner Dance	U Shape
Orchard Suite	650	320	100	650	480	304	420	80
Sentosa Suite	300	200	-	400	360	184	300	-
Cromwell Suite	350	200	50	400	372	190	300	72
Conservatory	200	-	25	350	240	72	-	40
Kensington Suite	150	80	40	150	120	80	84	38
Boardrooms	-	-	10	-	-	-	-	-
Changi	20	10	14	-	-	-	-	14
Marina	25	12	18	-	-	16	-	18
Tanglin	25	12	20	-	-	16	-	20
Brompton Suite	25	12	18	-	-	-	-	18
Harrington Suite	30	15	20	-	-	-	-	18



ORCHARD SUITE

The Orchard Suite is one of our largest function rooms and an ideal venue for gala dinners and award ceremonies. The Orchard Suite can be divided neatly, with a sliding partition, into two

well-equipped rooms which you can use half for a smaller event and the other for your own private pre-function space next door.

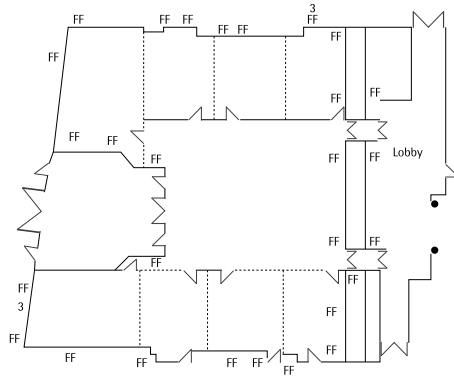


DIMENSIONS

Width	Length	Height	Floor Area
20m	21m	5.4m	420m ²

CAPACITIES

	Orchard	Orchard 1	Orchard 2
U-Shape	80	40	40
Boardroom	100	50	50
Hollow Square	120	60	60
Exhibition	45	16	16
Banquet	400	190	210
Dinner Dance	350	160	170
Reception	650	280	320
Theatre	500	225	240
Classroom	300	132	140
Cabaret	288	104	112



SENTOSA SUITE

This expansive space is the ideal place to celebrate a special occasion, a luxurious event or a simple business conference. Due to its flexibility, syndicate and breakout rooms are available and when used in conjunction with the Orchard Suite, additional

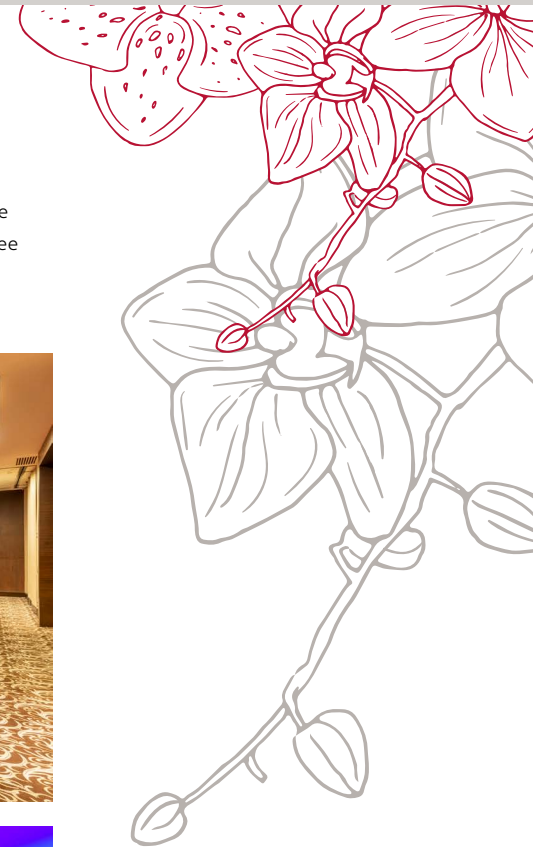
space can be created for large events. Its pre-function area is perfect for Champagne receptions, delegate registration, tea and coffee breaks for day meetings and events.

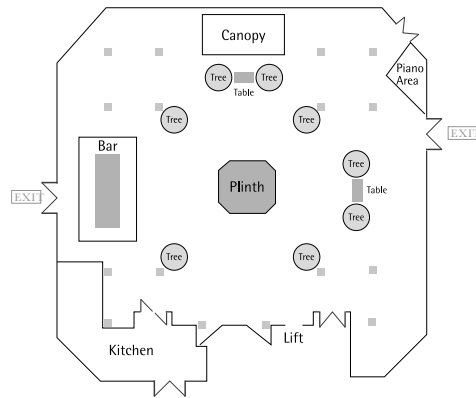
DIMENSIONS

Width	Length	Height	Floor Area
21m	21m	3.52m	393m ²

CAPACITIES

	Sentosa	Sentosa 1	Sentosa 2	Sentosa 3	Sentosa 4	Sentosa 5	Sentosa 6	Sentosa 7	Sentosa 8	Sentosa 9
U-Shape	-	21	8	10	8	8	10	8	21	27
Boardroom	-	20	10	12	10	10	12	10	20	21
Hollow Square	-	24	12	14	12	12	14	12	24	33
Exhibition	30	-	-	-	-	-	-	-	-	10
Banquet	300	30	-	-	-	-	-	-	30	90
Dinner Dance	250	-	-	-	-	-	-	-	-	-
Reception	400	50	30	30	20	20	30	20	30	150
Theatre	300	43	20	24	20	20	20	18	36	100
Classroom	200	20	9	15	9	9	15	9	20	80
Cabaret	184	24	-	-	-	-	-	-	24	72





DIMENSIONS

Width	Length	Height	Floor Area
20.66m	21.5m	5.4m	420m ²

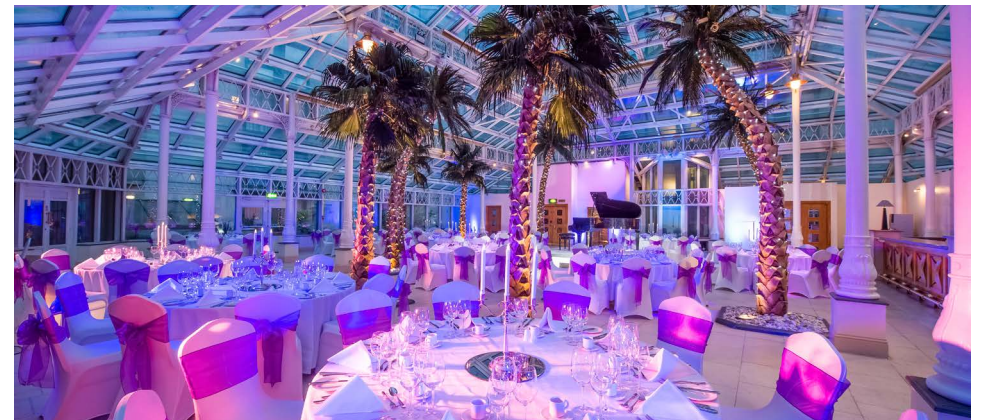
CAPACITIES

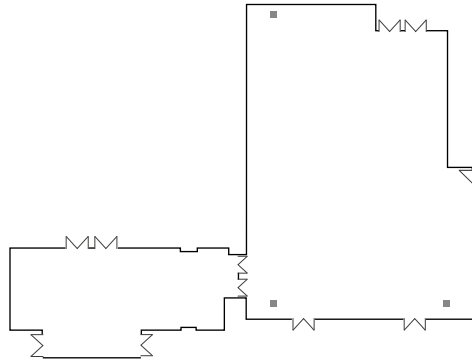
	Conservatory
U-Shape	35
Boardroom	25
Hollow Square	40
Exhibition	32
Banquet	200
Dinner Dance	150
Reception	-
Theatre	200
Classroom	-
Cabaret	72

CONSERVATORY

The Conservatory is a truly stunning glass room at the vibrant heart of the Millennium Conference Centre. Stylish and elegant, the Conservatory makes a big impression. The beauty of this magnificent glass structure is further enhanced by its splendidly up-lit palm trees that create a new definition of chic.

By day it's a charming and relaxed setting for hospitality and lunches, at night, a sparkling gem. This jewel in the crown is ideal for parties, receptions, private dining, wedding ceremonies and exhibitions.





CROMWELL SUITE

With its chandeliers and vaulted ceiling, this stylish room is a favourite setting for private dinners of up to 250, but can also comfortably accommodate up to 350 delegates for a theatre-style presentation. Effective partitioning also means you can break the room into four smaller meeting rooms.

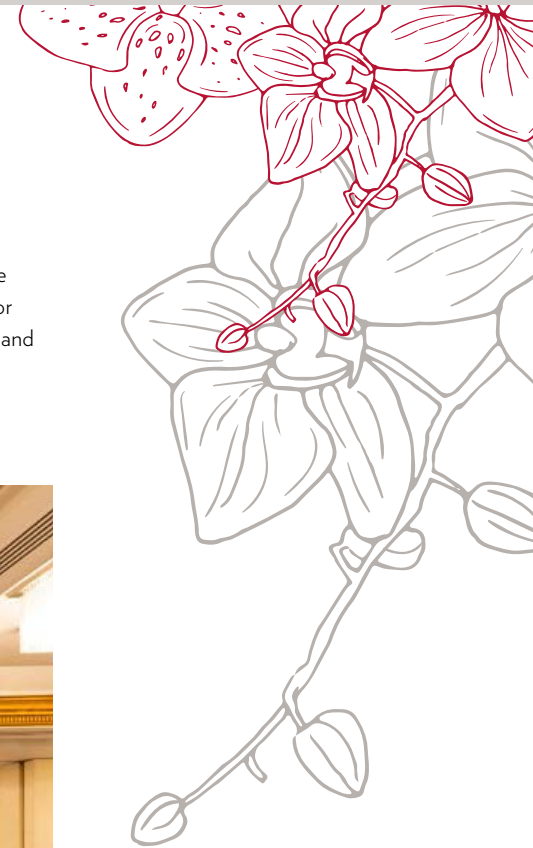
Cromwell Suite can also be combined with the main rooms and used as a pre-function area for welcome drinks, delegate registration and tea and coffee breaks. This suite is ideal for weddings, parties, conferences and conventions.

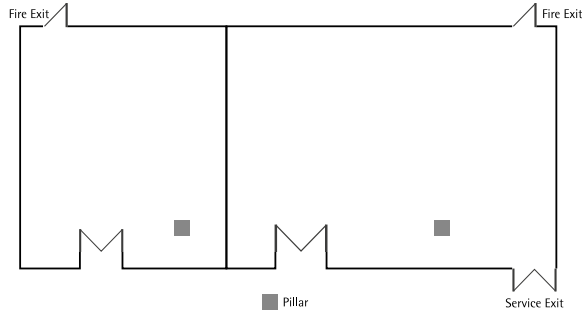
DIMENSIONS

Width	Length	Height	Floor Area
16.12m	20.62m	3.75m	312m ²

CAPACITIES

	Cromwell	Cromwell 1,2,3	Cromwell 4	Cromwell 5	Cromwell 1+2	Cromwell 3+4
U-Shape	72	27	24	40	48	45
Boardroom	50	24	18	26	42	39
Hollow Square	84	33	30	45	57	54
Exhibition	24	-	-	8	15	15
Banquet	310	50	40	70	120	110
Dinner Dance	250	-	-	60	100	-
Reception	400	90	90	130	250	250
Theatre	350	70	50	100	180	140
Classroom	200	36	28	42	110	80
Cabaret	190	32	24	48	80	72





KENSINGTON SUITE

The Kensington Suite is a discreet and versatile meeting space perfectly suited to a number of event styles. This spacious, naturally-lit room seats 150 theatre style and can be subdivided to create

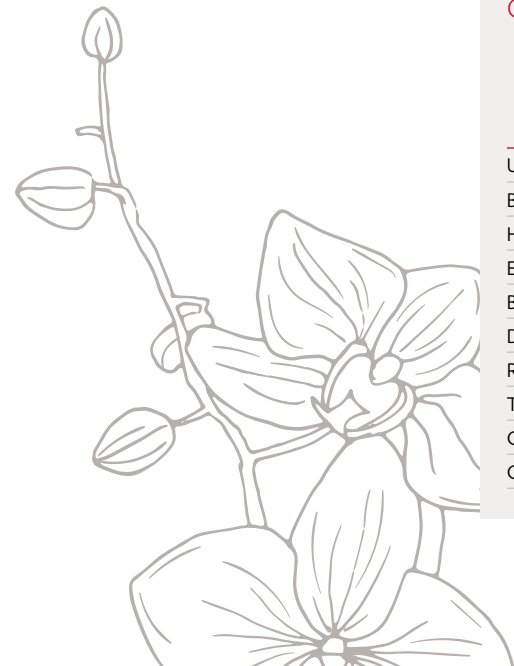
two separate rooms, each with separate entrances. This suite is ideal for intimate weddings, private and corporate parties and smaller meetings in classroom or theatre style.

DIMENSIONS

Width	Length	Height	Floor Area
8.50m	18.50m	2.03m	15725m ²

CAPACITIES

	Kensington	Kensington 1	Kensington 2
U-Shape	38	24	12
Boardroom	40	30	12
Hollow Square	42	32	18
Exhibition	18	10	6
Banquet	100	70	30
Dinner Dance	70	-	-
Reception	125	100	50
Theatre	150	90	45
Classroom	80	63	20
Cabaret	80	40	32





BOARDROOMS

With seven boardrooms to choose from, you are sure to find the ideal space for your meeting. They offer the latest in AV technology including 10MB uncontested SDSL broadband, Wi-Fi with Ethernet ports, VDUs and screening facilities.

DIMENSIONS

	Width	Length	Height	Floor Area
Brompton	3.81m	6.73m	2.23m	25.64m ²
Gloucester	3.45m	6.72m	2.23m	23.8m ²
Harrington	3.71m	7.21m	2.94m	26.75m ²
Changi	3.30m	7.62m	2.20m	25.15m ²
Marina	3.5m	7.6m	2.2m	26.6m ²
Tanglin	4m	7.4m	2.2m	29.6m ²
Stanhope	3.8m	5.1m	2.03m	19.38m ²

CAPACITIES

	Brompton	Gloucester	Harrington	Changi	Marina	Tanglin	Stanhope
U-Shape	18	-	18	-	-	-	-
Boardroom	20	10	20	14	18	20	8
Hollow Square	18	-	18	14	18	20	-
Exhibition	-	-	-	-	-	-	-
Banquet	-	-	-	-	-	-	-
Dinner Dance	-	-	-	-	-	-	-
Reception	-	-	-	-	-	-	-
Theatre	25	-	30	20	25	25	-
Classroom	12	-	15	10	12	12	-
Cabaret	16	-	16	-	16	16	-





AV FACILITIES

We have partnered with award-winning audio-visual company AV Projections Ltd to give you unlimited access to the latest in conference and events technology, including a full production services support.

Specialists in corporate and social events, AV Projections offer a well-designed range of cost effective ready-made sets and the latest in AV, sound and lighting equipment. For larger events, experienced project managers are on hand to provide creative staging and production solutions to meet your specific needs.

- Stage set design
- Video conferencing
- Lighting
- Sound
- Project management
- Video production
- Graphic design
- 3D animation
- IT and networking



ALLOW YOURSELF TO BE ENTICED BY THE COMFORT AND CHARM OF OUR KENSINGTON HOTEL

610 guest rooms • Check-in: 3pm; Check-out: 12 noon



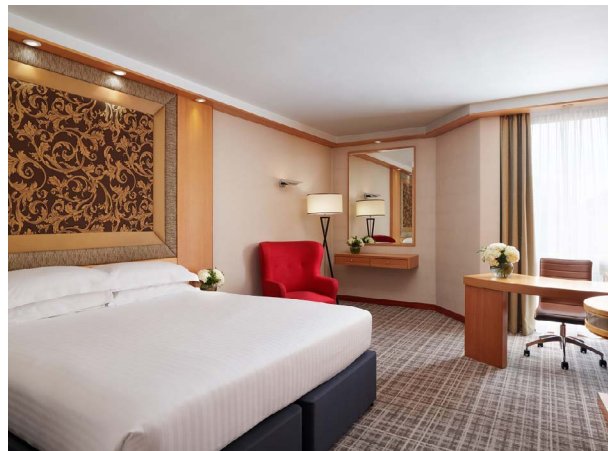
DELUXE ROOMS

Newly refurbished, spacious and elegant with flat screen TVs with satellite channels, high speed internet access, tea and coffee making facilities, hairdryer, iron, safe deposit, direct dial telephone and climate control.



STUDIO SUITE

Exude luxury and are individually designed with king size beds and separate sitting areas. Guests also benefit from complimentary access to the Club Lounge.



EXECUTIVE KING ROOM

With a luxuries double bed, are popular with business travellers and families. A modern design, they can accommodate an extra bed or interconnected. Along with Wi-Fi, rooms have air conditioning and bathrobes.



CLUB KING ROOM

Located on higher floors, these spacious rooms offer guests complimentary access to the Club Lounge with continental breakfast and refreshments.

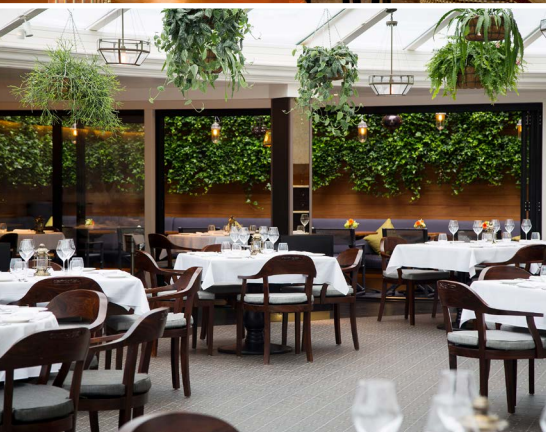


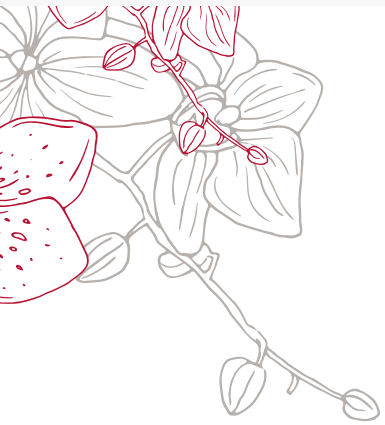


RESTAURANTS

At Millennium Gloucester Hotel London Kensington, our guests are treated to a splendid dining experience.

- **Bugis Street Brasserie** – award-winning Singaporean and Chinese restaurant, open daily for lunch and dinner
- **South West 7** – the place to be every morning for a sumptuous buffet breakfast
- **Bombay Brasserie** – luxurious Indian restaurant with sky lit conservatory





DELEGATE MENUS

Our hotel created a unique concept where we aim to 'Wake the Mind, Fuel the Body and Treat the Soul'.

Enjoy our menus, specially designed to bring energy, vitality and well-being.

From yoghurt stations with honey and fruit, to Moroccan lamb tagine, our incredible selection of dishes will make your event a memorable one.





DISCOVER KENSINGTON

With its convenient Kensington hotel location at the heart of the city and Gloucester Road Underground Station just next door, you'll discover how easy it is to explore the city.

PLACES OF INTEREST

The Royal Albert Hall • Kensington Palace & Gardens • The Natural History Museum and Science Museum • The Victoria and Albert Museum • Olympia Exhibition Centre • Notting Hill and Portobello Market • Westfield London shopping centre • Harrods • Knightsbridge

TRANSPORT LINKS

London Heathrow Airport

By train 30 mins

By car 30 mins

London Stanstead Airport

By train 75 mins

By car 60 mins

Gatwick Airport

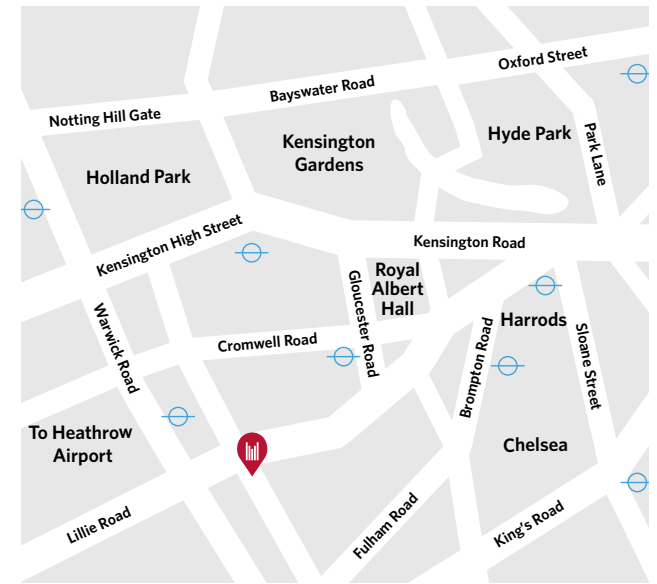
By train 50 mins

By car 75 mins

Underground

Gloucester Road 2 mins

South Kensington 10 mins





Millennium Gloucester Hotel London Kensington

4-18 Harrington Gardens London,
United Kingdom SW7 4LH

T +44 (0)20 7373 6030

E mccevents.gloucester@millenniumhotels.com